



Telescopic Webcam Ceiling Mount

TM-WEBCAM EU SAP: 5708369

vav.link/tm-webcam

Standard tripod mount screw fits any webcam

Fits [Logitech Brio](#) webcam for [Microsoft Whiteboard](#)

Fits [Huddly](#) cameras

Can fix to wall as boom

Overall length 440-735 mm (17.3" – 28.9")

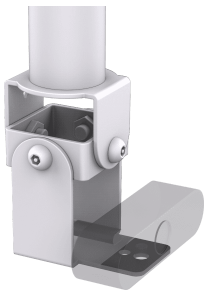
Pole can be removed to mount as close as possible to ceiling

Fits [Logitech MeetUp](#)

Fits [Logitech Rally](#) camera

The TM-WEBCAM is a universal webcam ceiling bracket for mounting a USB camera safely to a ceiling. The telescopic design allows fast deployment and adjustment. It has a greater range than most other telescopic mounts.

There is a growing demand to mount USB cameras in the ceiling for meeting applications. For example Microsoft Whiteboard uses a ceiling-mounted camera to digitize writing on a physical whiteboard for collaboration.



One-Person Installation

An example of thoughtful design is the length adjustment clamp system which requires only one hand.

Flush-Mount Option

The pole can be removed for "flush-mounting" the camera as close to the ceiling as possible.

Sloping Ceilings

A top tilting mechanism is included which tilts to a full 90 degrees, allowing it to fix to the side of a ceiling joist. Or you can use the bracket as a boom fixed to a wall if need be.

Wall Boom Applications

The bracket can alternatively be fixed horizontally to a wall to be used as a boom.

Telescopic

The overall length is between 440-735 mm (17.3" – 28.9"). *Note: the length of this bracket cannot be extended.*

Easy fit

The webcam fixes using the standard tripod screw which is included.

Cable Management

Just drop the cables down through the pole to terminate to the camera for a professional look. Cables are out of sight.

Tools Included

A spanner and pin-hex key are included. Vision also includes a hex-key bit for a power drill to speed up installation.

Secure

Quick-release mechanisms make life easier for thieves, so the TM-WEBCAM is secure and features security bolts.

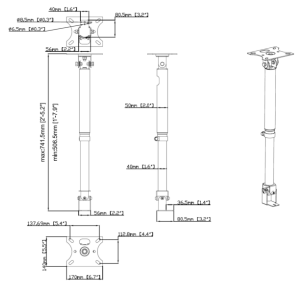
Camera Tilt

The bottom bracket is adjustable so you can direct the camera where you need to.

Ceiling Trim Disc

For applications where the pole drops down through a hole in a false ceiling, a plastic trim disc is included to tidy the hole.

VISION



MANUAL

Manual
EN PDF 181.57 KB
files.visionaudiovisual.com/products/TM-WEBCAM/manuals/TM-WEBCAM_manual.pdf

IMAGE

Product Images
ZIP 3.61 MB
<files.visionaudiovisual.com/products/TM-WEBCAM/images/TM-WEBCAM.zip>

SPECIFICATIONS

BOX DIMENSIONS
393 x 150 x 80 mm / 15.47" x 5.91" x 3.15"

PACKAGED WEIGHT
3 kg / 6.6 lbs

SAFE WORKING LOAD
10kg / 22.1 lbs

COLOUR
Satin White

ACCESSORIES INCLUDED
1 x H50 Pin-Hex key 1 x H50 power drill hex bit 1 x 17mm (0.7") Spanner 4 x M8 50mm (2.0") Ceiling Fixtures with rawl plugs 1 x Ceiling Trim Disc 1 x 1/4-20 UNC Screw 9 mm long 1 x M6 12mm (0.47") Screw

WARRANTY
Lifetime return-to-base

COMPLIANCES
n/a

ORDER PART CODE
TM-WEBCAM [EU SAP: 5708369 / US SAP: tba]